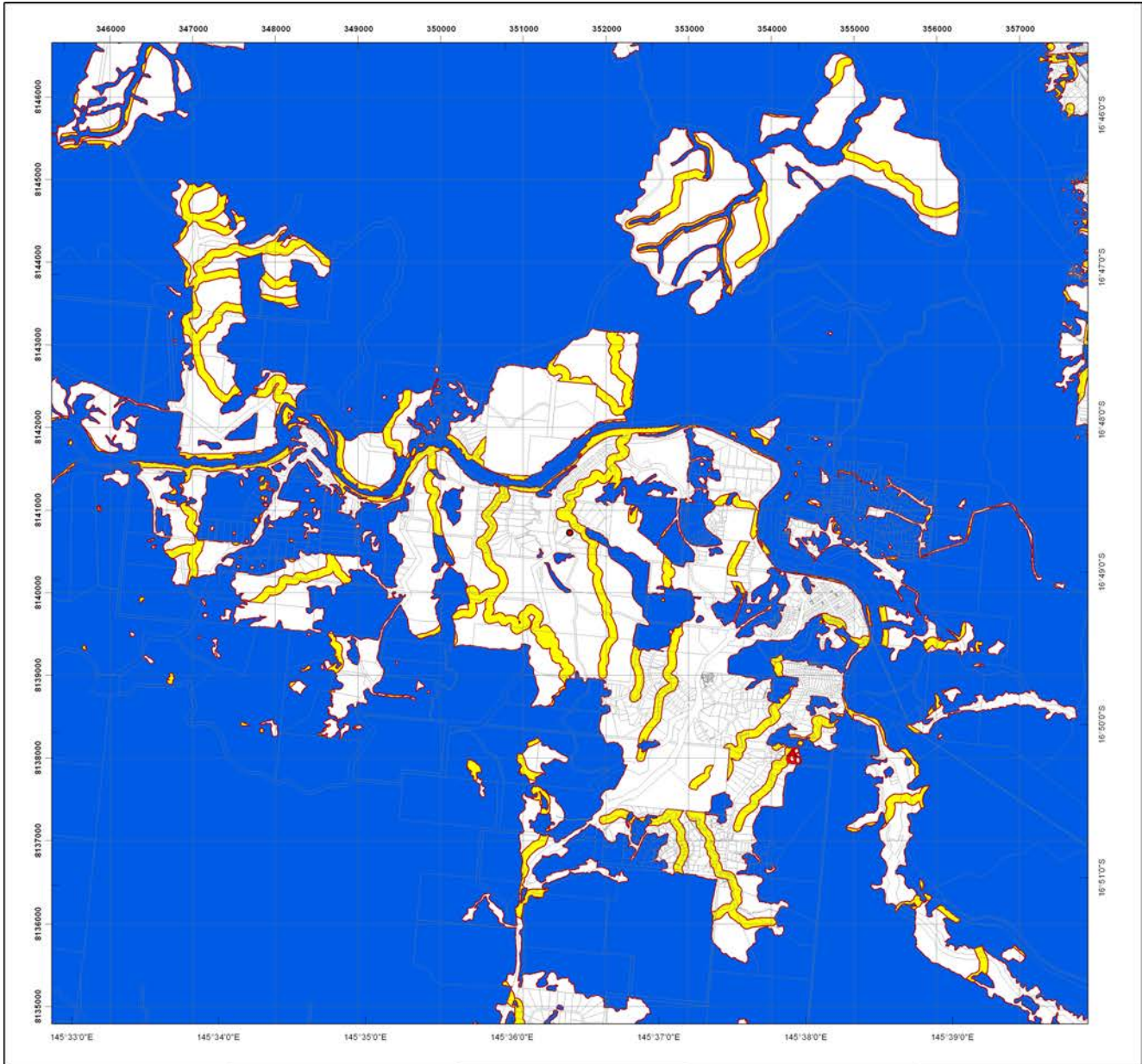


---

## Appendix A NRM vegetation mapping



## Regulated Vegetation Management Map

### Legend

- Coordinates
- Category A area (Vegetation offsets/compliance notices/VDecs)
- Category B area (Remnant vegetation)
- Category C area (High-value regrowth vegetation)
- Category R area (Reef regrowth watercourse vegetation)
- Category X area (Vegetation not regulated under the VMA)
- Water
- Area not categorised
- Cadastral line
- Property boundaries shown are provided as a locational aid only



This product is projected into:  
 GDA 1994 MGA Zone 55

### Disclaimer:

While every care is taken to ensure the accuracy of this product, the Department of Natural Resources and Mines makes no representations or warranties about its accuracy, reliability, completeness or suitability or any particular purpose and disclaims all responsibility and all liability (including without limitation, liability in negligence) for all expenses, losses, damages (including indirect or consequential damage) and costs which you might incur as a result of the product being inaccurate or incomplete in any way and for any reason.

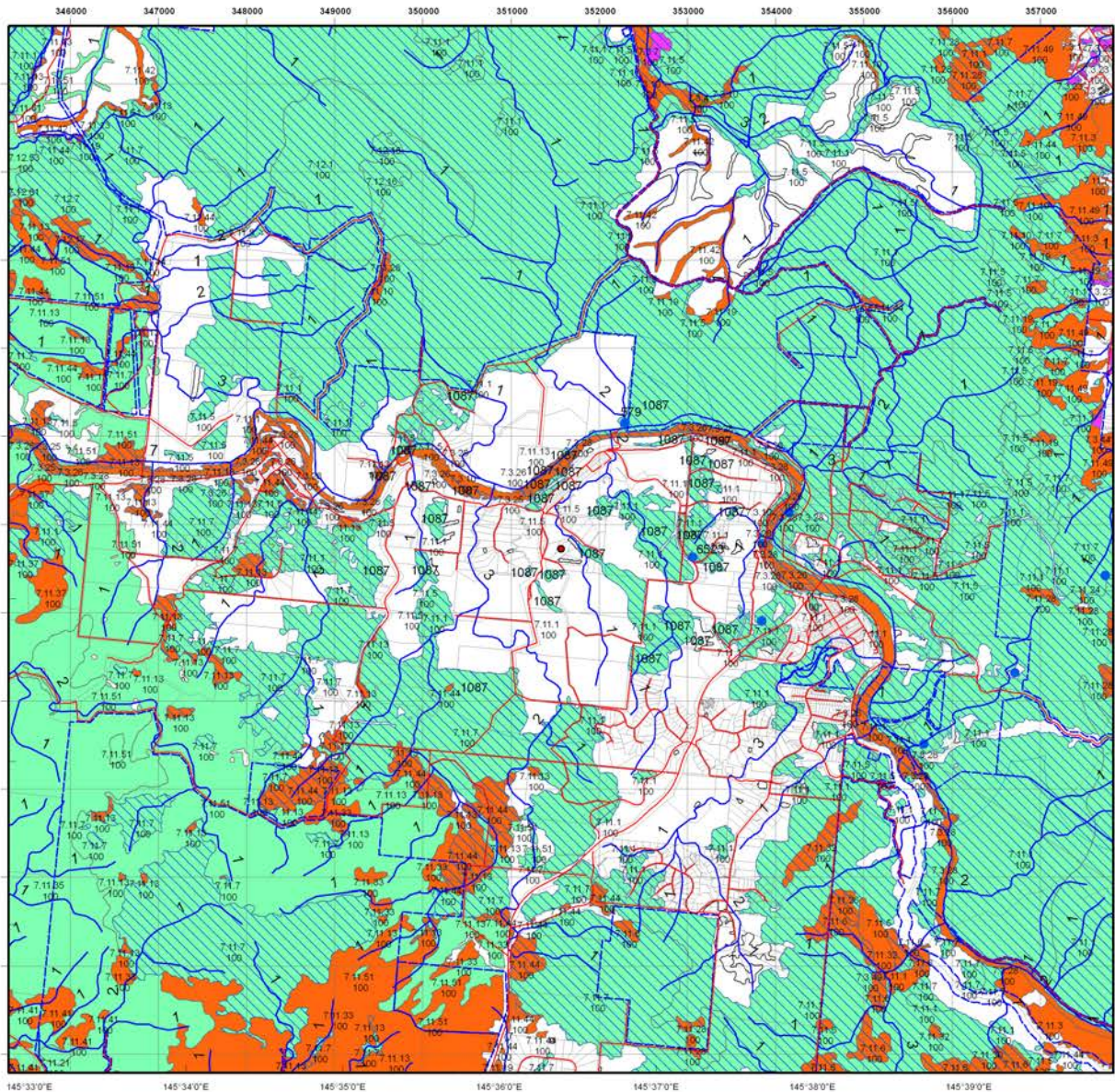
Additional information required for the assessment of vegetation values is provided in the accompanying "Vegetation Management Supporting map". For further information go to the web site: [www.dnrm.qld.gov.au](http://www.dnrm.qld.gov.au) or contact the Department of Natural Resources and Mines.

Digital data for the regulated vegetation management map is available from the Queensland Spatial Portal at <http://www.information.qld.gov.au/>

This map is updated on a monthly basis to ensure new PMAVs are included as they are approved.







## Vegetation Management Supporting Map

### Legend

- Coordinates
- Category A or B area containing endangered regional ecosystems
- Category A or B area containing of concern regional ecosystems
- Category A or B area that is a least concern regional ecosystem
- Category A or B area containing remnant vegetation
- Category A or B area under Section 20AH  
These areas are edged in yellow and filled with the remnant RE Status
- Category C area containing endangered regional ecosystems
- Category C area containing of concern regional ecosystems
- Category C area that is a least concern regional ecosystem
- Category C area containing high value regrowth vegetation
- Category C area under Section 20AI  
These areas are edged in purple and filled with the remnant RE Status
- Non Remnant
- Water
- ▨ Wetland on the vegetation management wetlands map
- ▨ Essential habitat on the essential habitat map
- Essential habitat species record
- ▬ Watercourse on the vegetation management watercourse map  
(Stream order shown as black number against stream where available)
- ▬ Roads
- ▬ National Parks, State Forest and other reserves
- ▬ Cadastral line
- ▬ Property boundaries shown are provided as a locational aid only



This product is projected into:  
 GDA 1994 MGA Zone 55

Labels for Essential Habitat are centred on the area of enquiry.

Regional ecosystem linework has been compiled at a scale of 1:100 000, except in designated areas where a compilation scale of 1:50 000 is available. Linework should be used as a guide only. The positional accuracy of RE data mapped at a scale of 1:100 000 is +/- 100 metres.

#### Disclaimer:

While every care is taken to ensure the accuracy of this product, the Department of Natural Resources and Mines makes no representations or warranties about its accuracy, reliability, completeness or suitability for any particular purpose and disclaims all responsibility and all liability (including without limitation, liability in negligence) for all expenses, losses, damages (including indirect or consequential damage) and costs which you might incur as a result of the product being inaccurate or incomplete in anyway and for any reason.

Additional information may be required for the purposes of land clearing or assessment of a regional ecosystem map or PMAV applications. For further information go to the web site: [www.dnrm.qld.gov.au](http://www.dnrm.qld.gov.au) or contact the Department of Natural Resources and Mines.

Digital data for the vegetation management watercourse map, vegetation management wetlands map, essential habitat map and the vegetation management remnant and regional ecosystem map are available from the Queensland Spatial Portal at <http://www.information.qld.gov.au/>



## Vegetation Management Act 1999 - Extract from the essential habitat database - version 4.0

Essential habitat is required for assessment under the:

- State Development Assessment Provisions - Module 8: Native vegetation clearing which sets out the matters of interest to the state for development assessment under the *Sustainable Planning Act 2009*; and
- Self-assessable vegetation clearing codes made under the *Vegetation Management Act 1999*

Essential habitat for one or more of the following species is found on and within 1.1 km of the identified subject lot/s or on and within 2.2 km of an identified coordinate on the accompanying essential habitat map.

This report identifies essential habitat in Category A, B and Category C areas.

The numeric labels on the essential habitat map can be cross referenced with the database below to determine which essential habitat factors might exist for a particular species.

Essential habitat is compiled from a combination of species habitat models and buffered species records.

The Department of Natural Resources and Mines website (<http://www.dnrm.qld.gov.au>) has more information on how the layer is applied under the State Development Assessment Provisions - Module 8: Native vegetation clearing and the *Vegetation Management Act 1999*.

Regional ecosystem is a mandatory essential habitat factor, unless otherwise stated.

Essential habitat, for protected wildlife, means a category A area, a category B area or category C area shown on the regulated vegetation management map-

- 1) (a) that has at least 3 essential habitat factors for the protected wildlife that must include any essential habitat factors that are stated as mandatory for the protected wildlife in the essential habitat database; or
- 2) (b) in which the protected wildlife, at any stage of its life cycle, is located.

Essential habitat identifies endangered or vulnerable native wildlife prescribed under the *Nature Conservation Act 1994*.

## Essential habitat in Category A and B (Remnant vegetation species record) areas:2200m Species Information

Label	Scientific Name	Common Name	NCA Status	Vegetation Community	Altitude	Soils	Position in Landscape
6523	Archontophoenix myolensis	None	E	rainforest (simple to complex mesophyll to notophyll vine forest)	300 to 400 m	(Rudosols, Tenosols, Sodosols, Chromosols)	gullies, creek banks and lower slopes
579	Litoria dayi	Australian Lace-lid	E	Associated with fast flowing rocky streams and soaks in rocky areas in rainforest/monsoon vine forest, including margins.	Sea level to 1400m.	no soil information	Near/in streams.

## Essential habitat in Category A and B (Remnant vegetation species record) areas:2200m Regional Ecosystems Information

Label	Regional Ecosystem (this is a mandatory essential habitat factor, unless otherwise stated)
6523	7.11.1
579	7.1.1, 7.1.4, 7.2.1, 7.2.2, 7.2.3, 7.2.5, 7.2.6, 7.2.6, 7.3.3, 7.3.4, 7.3.5, 7.3.10, 7.3.17, 7.3.20, 7.3.23, 7.3.25, 7.3.35, 7.3.36, 7.3.37, 7.3.38, 7.3.49, 7.3.50, 7.5.2, 7.8.1, 7.8.2, 7.8.3, 7.8.4, 7.8.11, 7.8.12, 7.8.13, 7.8.14, 7.8.16, 7.11.1, 7.11.2, 7.11.3, 7.11.7, 7.11.8, 7.11.12, 7.11.23, 7.11.24, 7.11.25, 7.11.27, 7.11.28, 7.11.29, 7.11.30, 7.11.32, 7.11.38, 7.11.40, 7.12.1, 7.12.2, 7.12.6, 7.12.7, 7.12.10, 7.12.11, 7.12.12, 7.12.13, 7.12.16, 7.12.19, 7.12.20, 7.12.26, 7.12.38, 7.12.39, 7.12.40, 7.12.42, 7.12.43, 7.12.44, 7.12.45, 7.12.46, 7.12.47, 7.12.48, 7.12.49, 7.12.50, 7.12.66, 7.12.68

## Essential habitat in Category A and B (Remnant vegetation) areas:2200m Species Information

Label	Scientific Name	Common Name	NCA Status	Vegetation Community	Altitude	Soils	Position in Landscape
1087	Casuarium casuarium johnsonii (southern population)	Southern Cassowary (southern population)	E	Dense lowland and highland tropical rainforest, closed gallery forest, eucalypt forest with vine forest elements, swamp forest and adjacent melaleuca swamps, littoral scrub, eucalypt woodland and mangroves; often using a habitat mosaic; will cross open eucalypt, canefields and dry ridges between rainforest patches.	Sea level to 1500m.	no soil information	None

## Essential habitat in Category A and B (Remnant vegetation) areas:2200m Regional Ecosystems Information

Label	Regional Ecosystem (this is a mandatory essential habitat factor, unless otherwise stated)
1087	7.1.3, 7.2.1, 7.2.3, 7.2.4, 7.2.5, 7.2.6, 7.2.11, 7.3.1, 7.3.3, 7.3.4, 7.3.5, 7.3.6, 7.3.7, 7.3.8, 7.3.10, 7.3.12, 7.3.17, 7.3.23, 7.3.25, 7.3.36, 7.3.37, 7.3.38, 7.8.1, 7.8.2, 7.8.3, 7.8.4, 7.8.7, 7.8.8, 7.8.14, 7.11.1, 7.11.2, 7.11.5, 7.11.6, 7.11.7, 7.11.10, 7.11.12, 7.11.13, 7.11.14, 7.11.18, 7.11.23, 7.11.24, 7.11.25, 7.11.28, 7.11.29, 7.11.30, 7.11.34, 7.12.1, 7.12.2, 7.12.4, 7.12.5, 7.12.7, 7.12.9, 7.12.13, 7.12.16, 7.12.17, 7.12.19, 7.12.20, 7.12.39, 7.12.40, 7.12.44, 7.12.47, 7.12.50, 7.12.68. Also includes secondary habitat within identified priority corridors, and secondary habitat surrounded by primary habitat. Secondary regional ecosystems are 7.1.1, 7.1.2, 7.1.4, 7.1.5, 7.2.2, 7.2.7, 7.2.8, 7.2.9, 7.2.10, 7.3.2, 7.3.9, 7.3.13, 7.3.14, 7.3.16, 7.3.19, 7.3.20, 7.3.21, 7.3.26, 7.3.28, 7.3.29, 7.3.30, 7.3.31, 7.3.34, 7.3.35, 7.3.39, 7.3.40, 7.3.43, 7.3.45, 7.3.46, 7.3.47, 7.3.49, 7.8.11, 7.8.12, 7.8.13, 7.8.15, 7.8.16, 7.11.16, 7.11.19, 7.11.21, 7.11.26, 7.11.27, 7.11.31, 7.11.32, 7.11.36, 7.11.39, 7.11.40, 7.11.42, 7.11.43, 7.11.44, 7.11.46, 7.11.49, 7.12.10, 7.12.11, 7.12.12, 7.12.21, 7.12.22, 7.12.32, 7.12.24, 7.12.25, 7.12.26, 7.12.27, 7.12.28, 7.12.29, 7.12.30, 7.12.34, 7.12.35, 7.12.37, 7.12.41, 7.12.45, 7.12.48, 7.12.49, 7.12.53, 7.12.59, 7.12.60, 7.12.61, 7.12.62, 7.12.67

## Essential habitat in Category C (High value regrowth vegetation) areas:2200m Species Information

(no results)

## Essential habitat in Category C (High value regrowth vegetation) areas:2200m Regional Ecosystems Information

(no results)