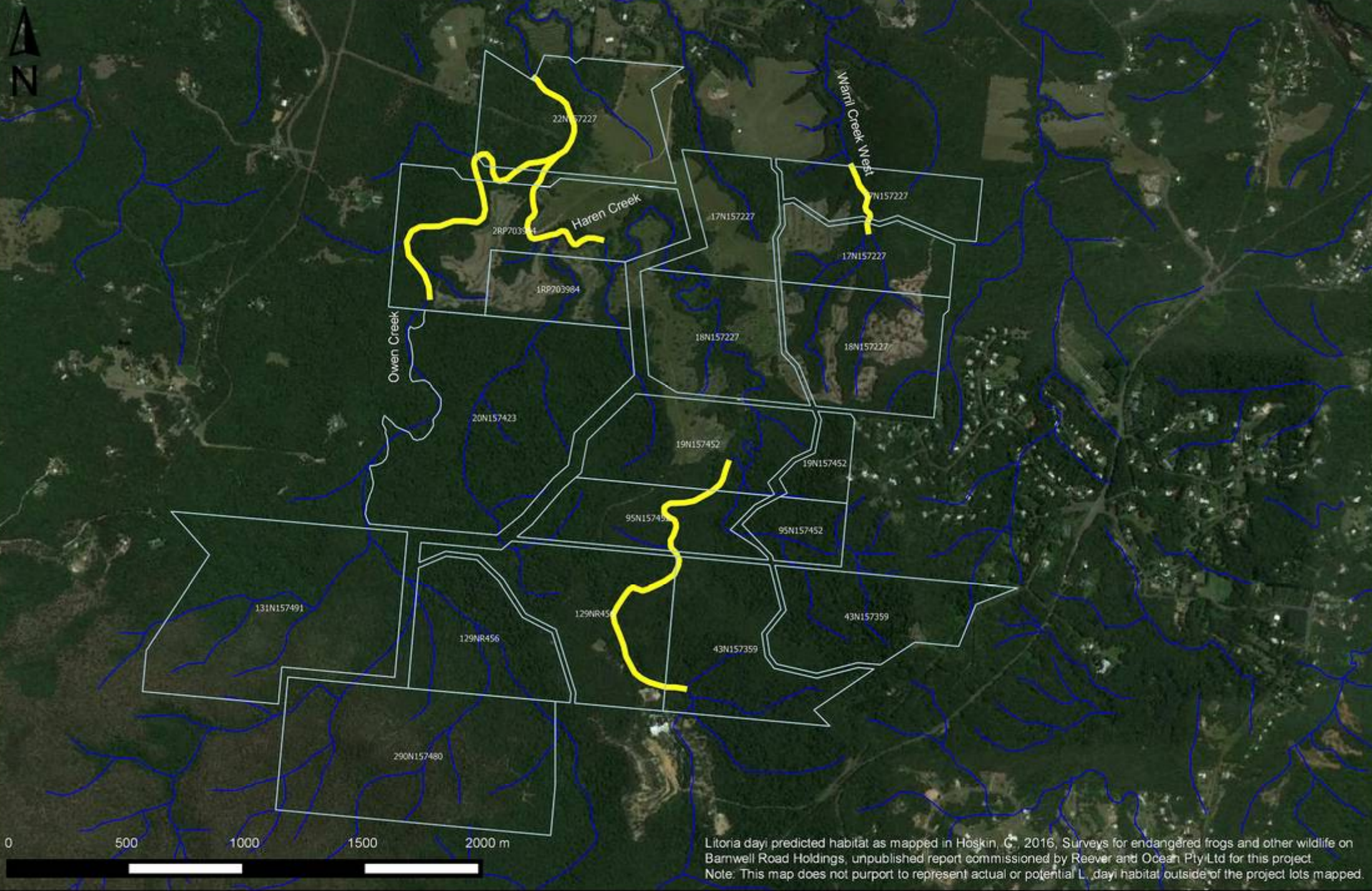


**ATTACHMENT G:
AUSTRALIA LACELID EXTENTS
- Astrebla Ecological Services**



Litoria dayi predicted habitat as mapped in Hoskin, C., 2016, Surveys for endangered frogs and other wildlife on Barnwell Road Holdings, unpublished report commissioned by Reever and Ocean Pty Ltd for this project.
 Note: This map does not purport to represent actual or potential L. dayi habitat outside of the project lots mapped.

Litoria dayi surveyed & predicted extent

Imagery © Google. Taken 23/10/2015. This image reproduced at 1:20,000 when printed at A4.
 Mareeba Shire DCDB © State of Queensland (Department of Natural Resources and Mines) [2015]
 Waterways layer © State of Queensland (Department of Natural Resources and Mines) [2015]
 GIS operator Simon Danielsen, Astrebla Ecological Services, 27/04/16.

Legend

- KUR-World lots
- Litoria dayi predicted extent