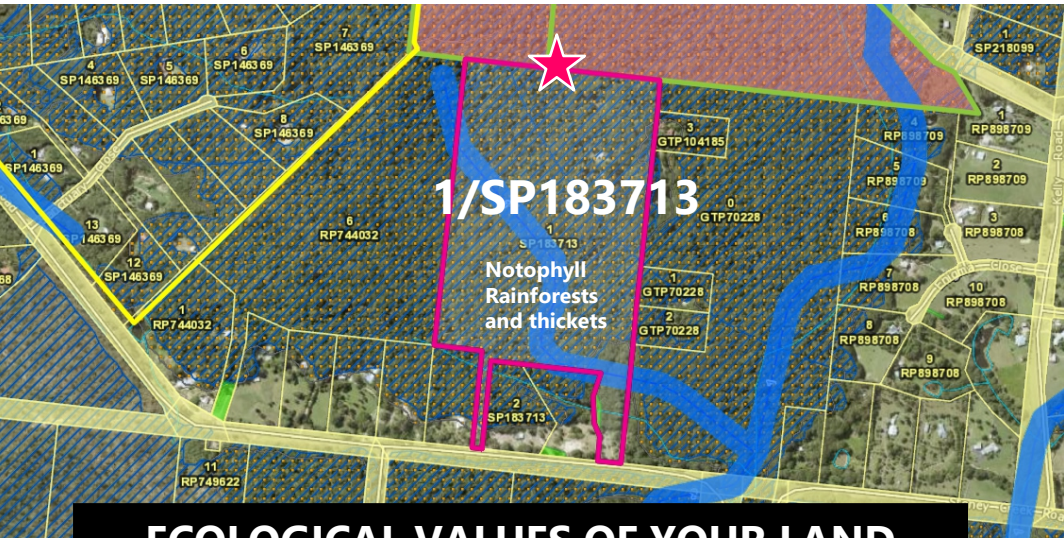


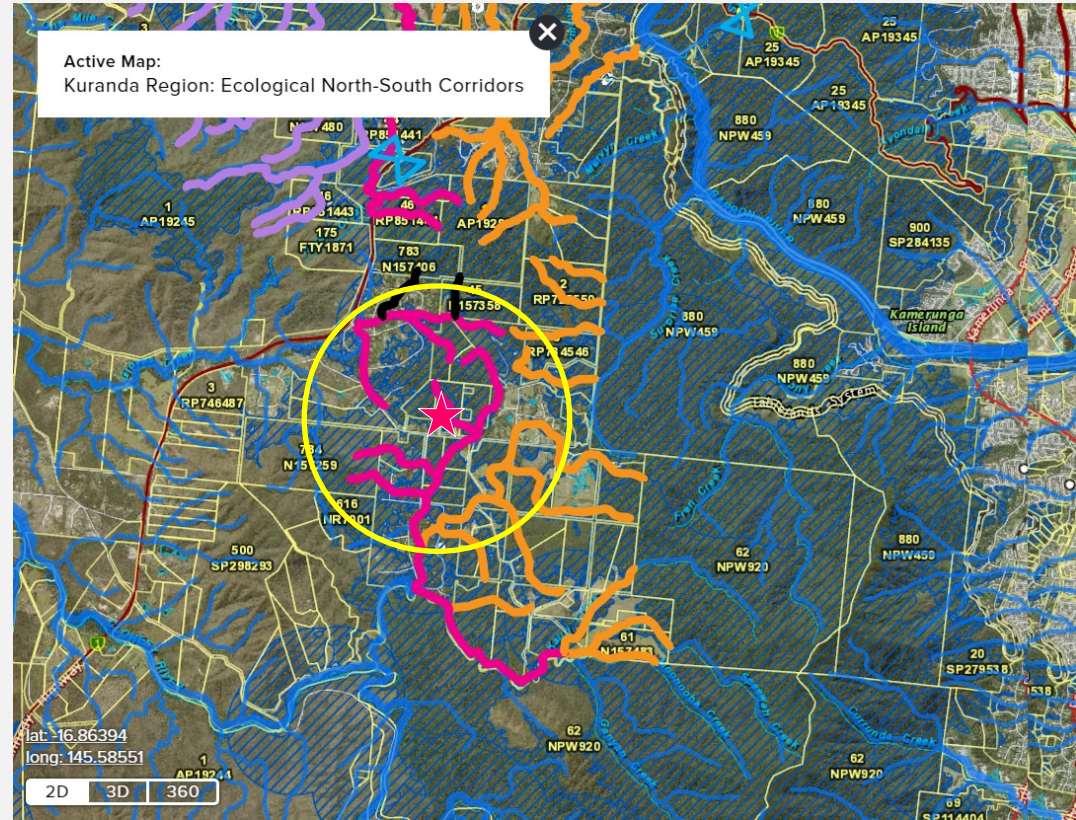


283 SPEEWAH ROAD SPEEWAH
Approximate boundary



ECOLOGICAL VALUES OF YOUR LAND

- Central Speewah Enviro Link Corridor
- Contains essential cassowary habitat
- 1100 metres natural rainforest creeks (including Buffered streams - conservation significance)
- Essential habitat (MSES regulated vegetation)
- Wildlife habitat (MSES threatened animal)



**ECOLOGICAL SUPER-HIGHWAYS
(NORTH-SOUTH WATERBODIES)**

- Speewah EnviroLink Corridor
- Speewah Bundarra Link Corridor

THREATENED SPECIES

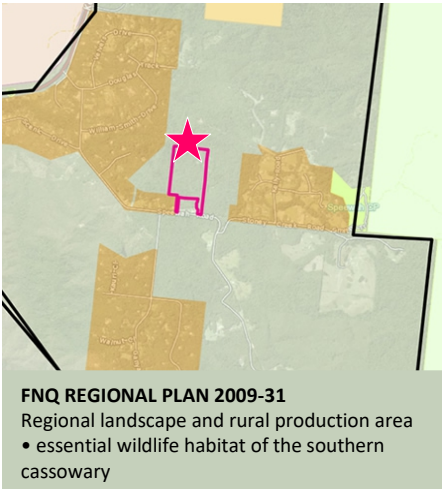
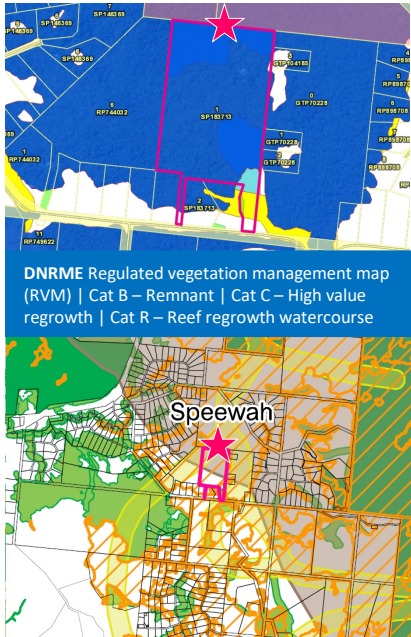
- Cassowary sightings: known cassowary country, birds on property
- Kuranda Tree Frog habitat: N/A (Speewah)



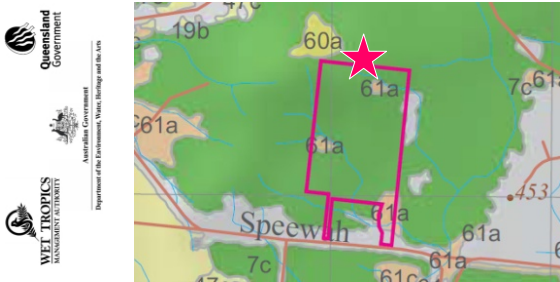
Conservation Agreement
> Expression of Interest

PROGRAM ID: KE-S13
TITLE: 1/SP183713
TOTAL LAND SIZE: 25.85 ha

This property contains intact Notophyll rainforests and thickets (7c) that has never been cleared, and precursor Secondary successional complexes (61a) both important cassowary essential habitat, ie. food forests. The property is integral to connectivity of the deeply fragmented Speewah Enviro Link Corridor providing local cassowary easy movement north-south through central Speewah along buffered streams.



**MAREEBA SHIRE COUNCIL PLANNING SCHEME
2016 Rural zone, inside Ecological Corridor,
inside Habitat Linkage**



WET TROPICS
VEGETATION

RAINFORESTS
Notophyll rainforests and thickets
7c Complex notophyll vine forests often with emergent . Moist foothills and uplands on metamorphics and granites.
VEGETATION COMPLEXES AND MOSAICS
Secondary successional complexes
61a Variable rainforest secondary successional forest complex. Very wet to dry lowlands to highlands on a variety of geologies.