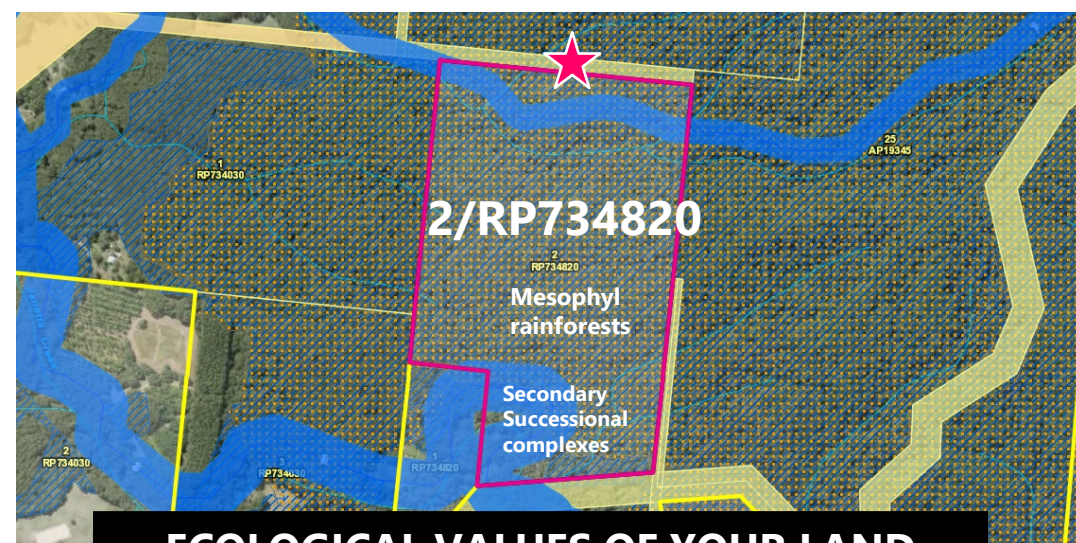


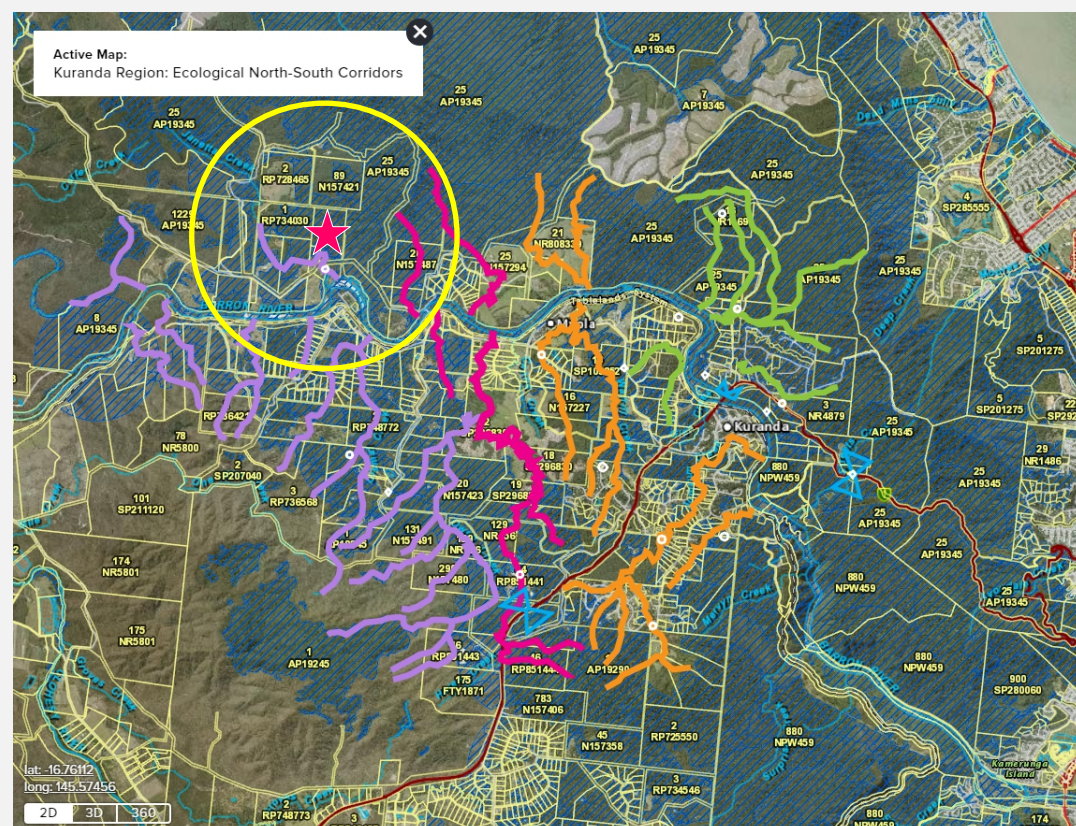


238 JEFFERY ROAD KURANDA  
Approximate boundary



## ECOLOGICAL VALUES OF YOUR LAND

- Northern edge Fairyland Link Corridor
- Contains essential cassowary habitat
- 1400 metres natural rainforest creeks (including Buffered streams - conservation significance)
- Essential habitat (MSES regulated vegetation)
- Wildlife habitat (MSES threatened animal)



### ECOLOGICAL SUPER-HIGHWAYS (NORTH-SOUTH WATERBODIES)

- Kuranda EnviroLink Corridor
- Bundarra Link Corridor
- Fairyland Link Corridor

### THREATENED SPECIES

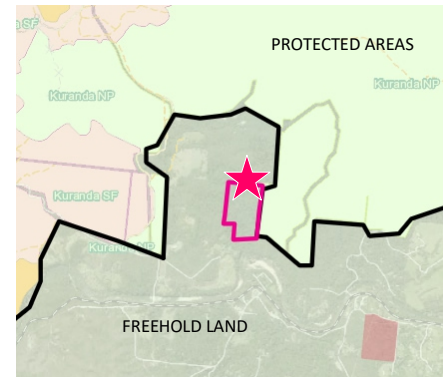
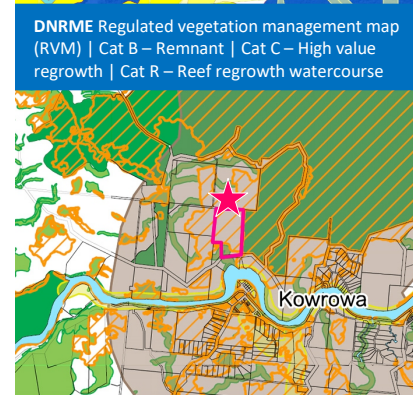
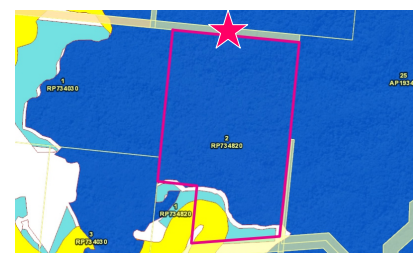
- Cassowary sightings: known cassowary country
- Kuranda Tree Frog habitat: Buffered streams pass through property, monitored population on property



## Conservation Agreement > Expression of Interest

PROGRAM ID: KE-O12  
TITLE: 2/RP734820  
TOTAL LAND SIZE: 39.21 ha

This property contains intact *Mesophyll vine rainforest* (2a) that has never been cleared, and precursor *Secondary successional complexes* (61a) both important cassowary essential habitat, ie. food forests. The property falls just upstream of the junction where Jenetta Creek joins the Barron River and is integral to connectivity of the Kuranda Enviro Link Corridor providing the local cassowary easy movement north-south through central Kuranda.



**FNQ REGIONAL PLAN 2009-31**  
Regional landscape and rural production area  
• essential wildlife habitat of the southern cassowary

**MAREEBA SHIRE COUNCIL PLANNING SCHEME 2016** Rural zone, inside Ecological Corridor, 100m to Habitat Linkage, adjacent Barron River



## WET TROPICS VEGETATION

### RAINFORESTS

#### Mesophyll rainforests

2a Mesophyll vine forest. Very wet to moist lowlands to uplands on a variety of geologies.

### VEGETATION COMPLEXES AND MOSAICS

#### Secondary successional complexes

61a Variable rainforest secondary successional forest complex. Very wet to dry lowlands to highlands on a variety of geologies.