

349 BLACK MOUNTAIN ROAD KURANDA  
Approximate boundary



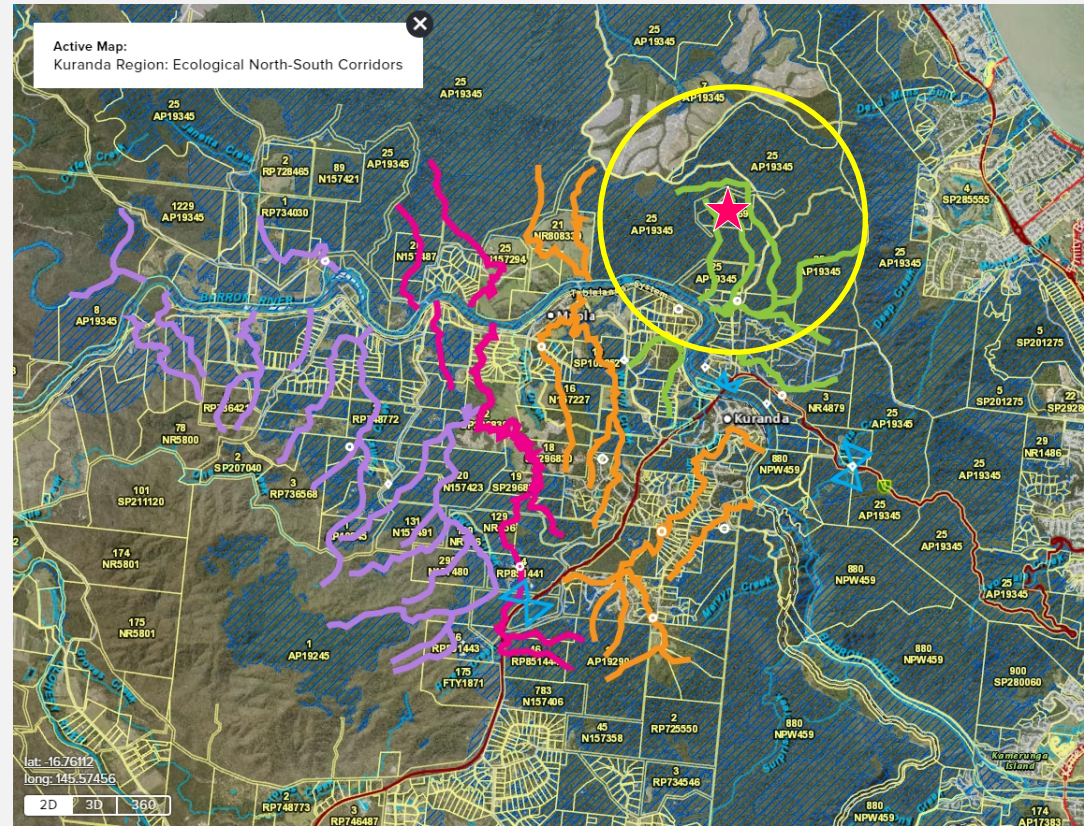
Conservation Agreement  
> Expression of Interest

PROGRAM ID: FL-T19  
TITLE: 13/NR1169  
TOTAL LAND SIZE: 36.69 ha

Surrounded by National Park on all sides, this property contains mature *Mesophyll vine rainforest* (2a) that has never been cleared; important cassowary essential habitat, ie. food forests. This property is known cassowary habitat and falls on the northern edge of the Fairyland Link Corridor.

ECOLOGICAL VALUES OF YOUR LAND

- Northern edge Fairyland Link Corridor
- Contains essential cassowary habitat
- 1300 metres natural rainforest creeks (all Buffered streams - conservation significance)
- Essential habitat (MSES regulated vegetation)
- Wildlife habitat (MSES threatened animal)

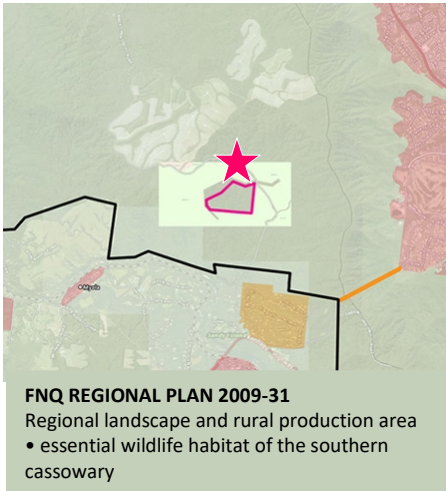
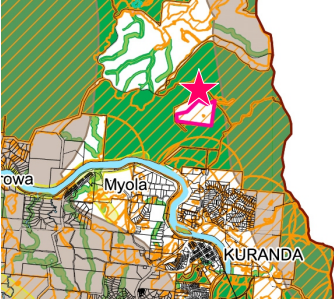
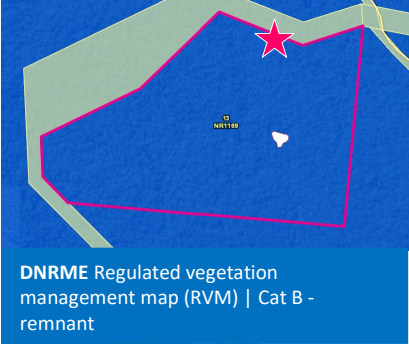


ECOLOGICAL SUPER-HIGHWAYS  
(NORTH-SOUTH WATERBODIES)

- Kuranda Envirolink Corridor
- Bundarra Link Corridor
- Fairyland Link Corridor

THREATENED SPECIES

- Cassowary sightings: known cassowary country with local population
- Kuranda Tree Frog habitat: Buffered streams pass through property, approximately 1200 metres upstream from recorded population



RAINFORESTS  
Mesophyll rainforests  
2a Mesophyll vine forest. Very wet to moist lowlands to uplands on a variety of geologies.