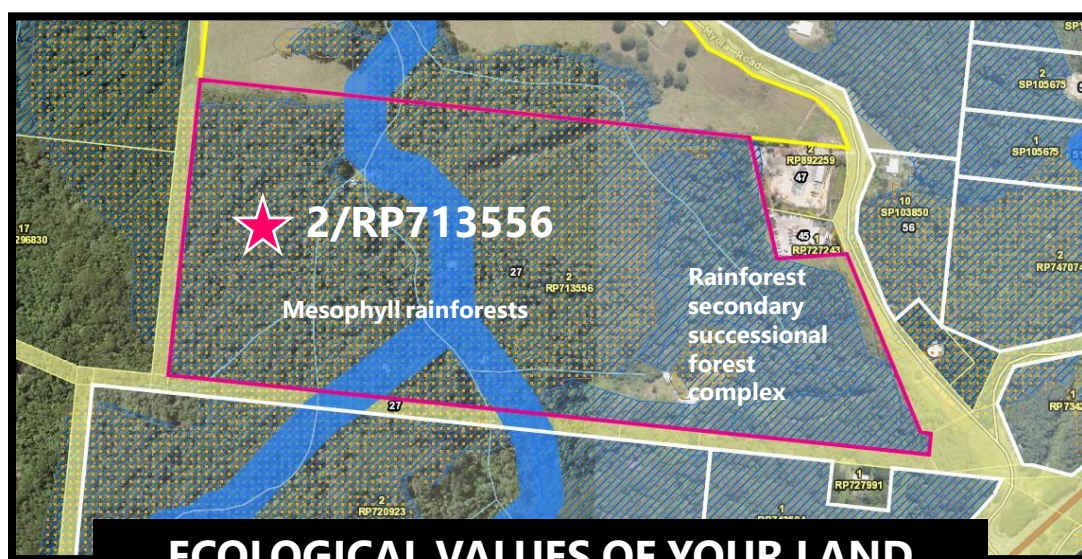


27 MYOLA ROAD KURANDA
Approximate boundary



ECOLOGICAL VALUES OF YOUR LAND

- Western edge Fairyland Link Corridor
- Contains essential cassowary habitat
- 1400 metres natural rainforest creeks (including Buffered streams - conservation significance)
- Essential habitat (MSES regulated vegetation)
- Wildlife habitat (MSES threatened animal)



Conservation Agreement Landowner Expression of Interest

PROGRAM ID: FL-M18

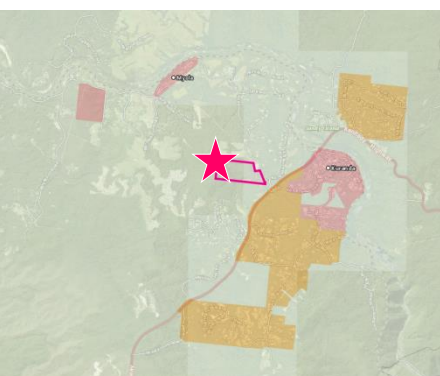
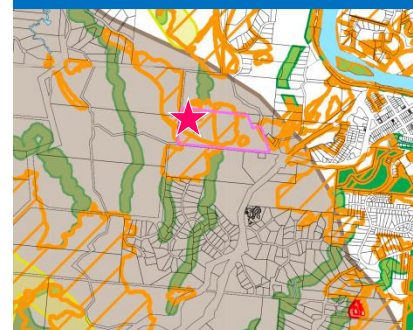
TITLE: 2/RP713556

TOTAL LAND SIZE: 27.92 ha

This property contains intact *Mesophyll vine rainforest* (2a) that has never been cleared, and precursor *Secondary successional complexes* (61a) both important cassowary essential habitat, ie. food forests. This property forms part of one of the oldest remnant patches in central Kuranda. The property is integral to connectivity of the Fairyland Link Corridor providing the local cassowary easy movement north-south through central and eastern Kuranda.

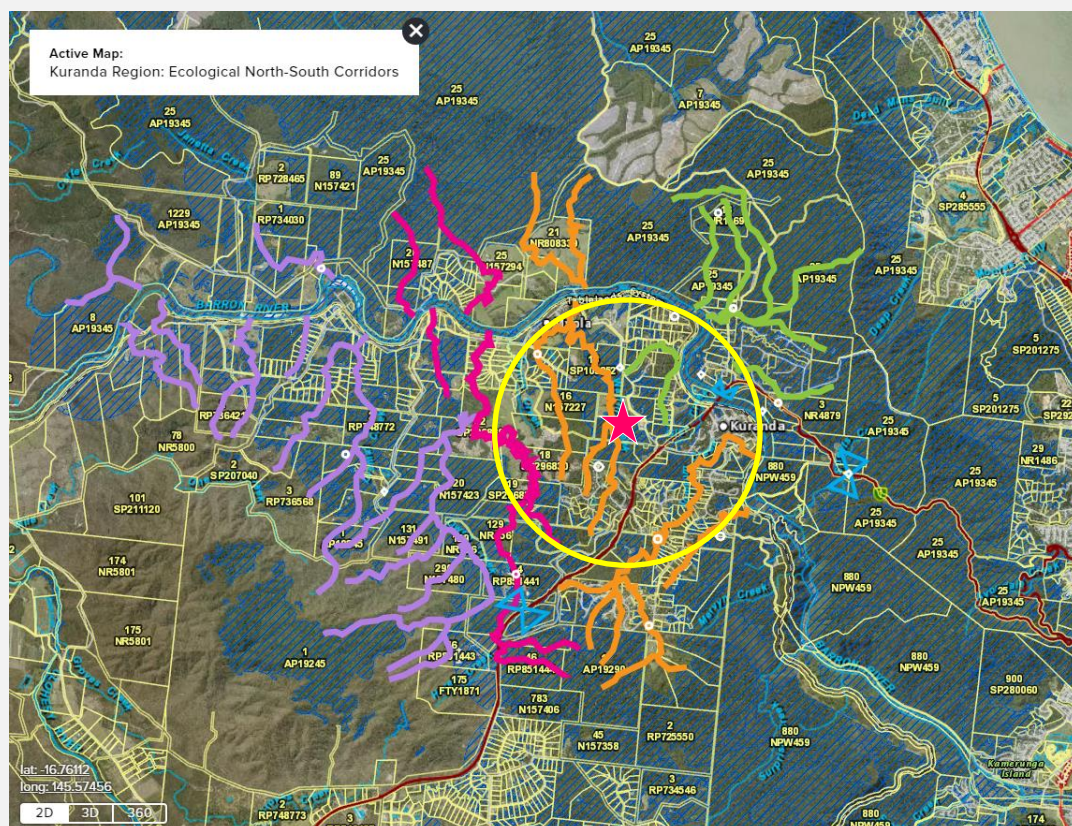


DNRME Regulated vegetation management map (RVM)



FNQ REGIONAL PLAN 2009-31
Regional landscape and rural production area
• essential wildlife habitat of the southern cassowary

MAREEBA SHIRE COUNCIL PLANNING SCHEME 2016
Rural zone, inside Ecological Corridor, 1500m to Habitat Linkage, 1100m to Barron River



ECOLOGICAL SUPER-HIGHWAYS (NORTH-SOUTH WATERBODIES)

- Kuranda Envirolink Corridor
- Bundarra Link Corridor
- Fairyland Link Corridor

THREATENED SPECIES



Cassowary sightings within 2km: 5 birds



Kuranda Tree Frog habitat: Warri creek passes through property, approximately 2000 metres upstream from recorded population



WET TROPICS VEGETATION

RAINFORESTS

Mesophyll rainforests

2a Mesophyll vine forest. Very wet to moist lowlands to uplands on a variety of geologies.

VEGETATION COMPLEXES AND MOSAICS

Secondary successional complexes

61a Variable rainforest secondary successional forest complex. Very wet to dry lowlands to highlands on a variety of geologies.

61e Variable communities of native vegetation with a significant component of exotic species in the canopy, understorey and/or ground cover. Wet and moist lowlands on a variety of geologies.