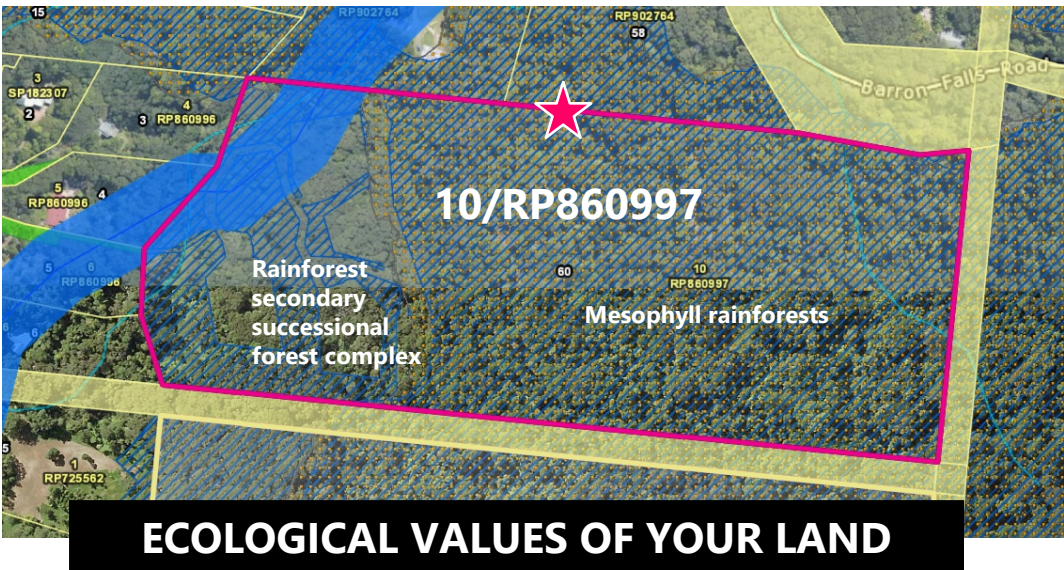
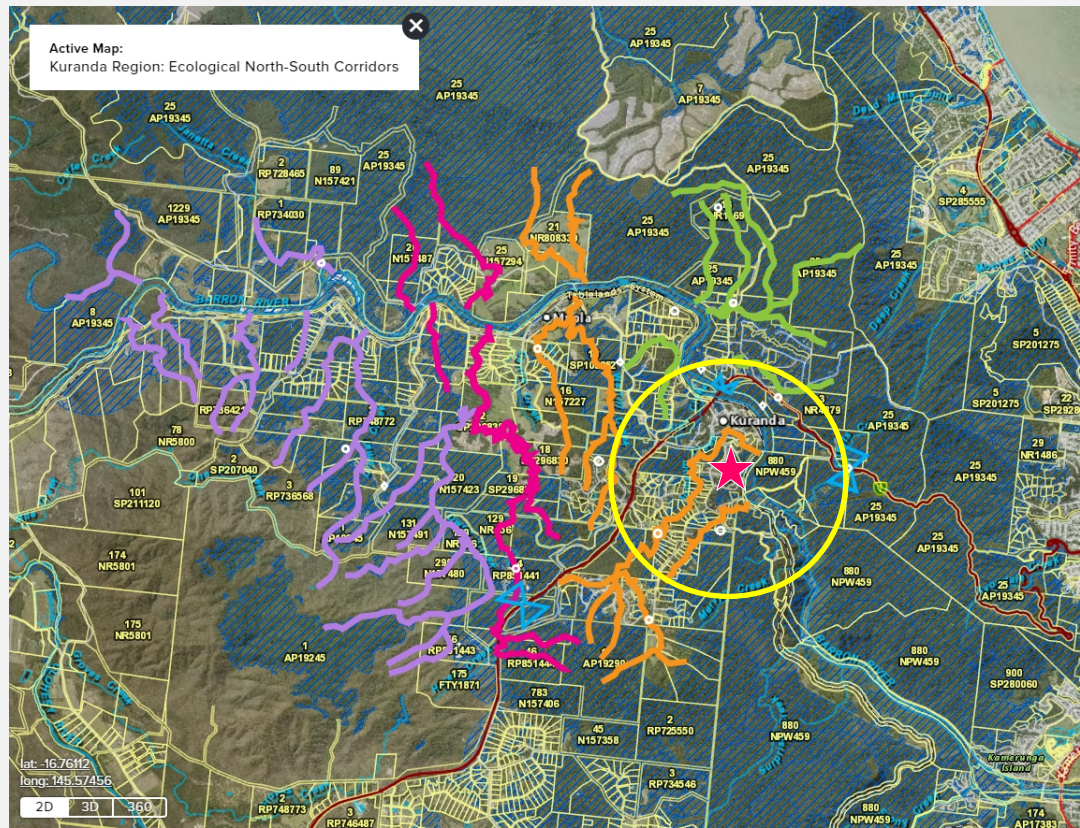




60 BARRON FALLS ROAD KURANDA  
Approximate boundary



- Eastern edge Bundarra Link Corridor
- Contains essential cassowary habitat
- 270 metres natural rainforest creeks (including Buffered stream - conservation significance)
- Essential habitat (MSES regulated vegetation)
- Wildlife habitat (MSES threatened animal)



**ECOLOGICAL SUPER-HIGHWAYS  
(NORTH-SOUTH WATERBODIES)**

- Kuranda Envirolink Corridor
- Bundarra Link Corridor
- Fairyland Link Corridor

**THREATENED SPECIES**

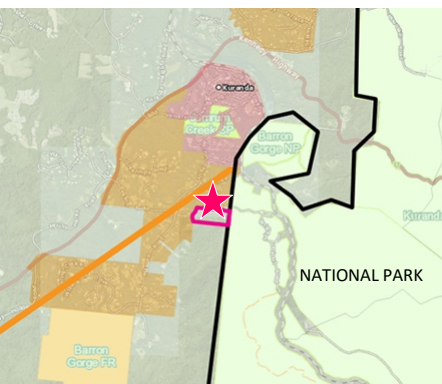
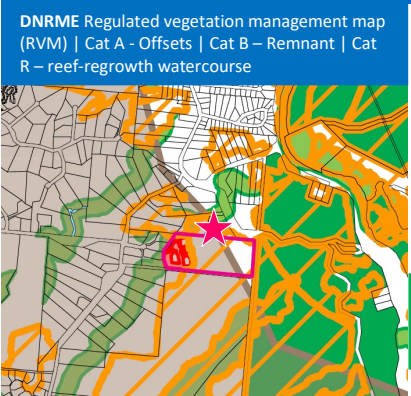
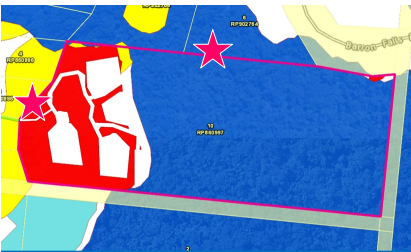
- Cassowary sightings within 3km: 6 birds
- Kuranda Tree Frog habitat: Buffered stream passes through property, approximately 800 metres upstream from recorded population



**Conservation Agreement  
> Expression of Interest**

PROGRAM ID: BL-B17  
TITLE: 10/RP860997  
TOTAL LAND SIZE: 10.54 ha

Adjoining National Park on the back boundary, this property contains intact remnant *Mesophyll vine rainforest* (2a), and precursor *Secondary successional complexes* (61e), both important cassowary essential habitat, ie. food forests. The property is strategically located in the Bundarra Link Corridor and provides additional buffering for National Park, the Barron River and the local cassowary easy movement through central and eastern Kuranda.



**FNQ REGIONAL PLAN 2009-31**  
Regional landscape and rural production area  
• essential wildlife habitat of the southern cassowary

**MAREEBA SHIRE COUNCIL PLANNING SCHEME 2016 Rural zone, inside Ecological Corridor, 2500m to Habitat Linkage, 800m to Barron River**



**WET TROPICS  
VEGETATION**

**RAINFORESTS**

**Mesophyll rainforests**  
2a Mesophyll vine forest. Very wet to moist lowlands to uplands on a variety of geologies.

**VEGETATION COMPLEXES AND MOSAICS**

**Secondary successional complexes**  
61e Variable communities of native vegetation with a significant component of exotic species in the canopy, understorey and/or ground cover. Wet and moist lowlands on a variety of geologies.