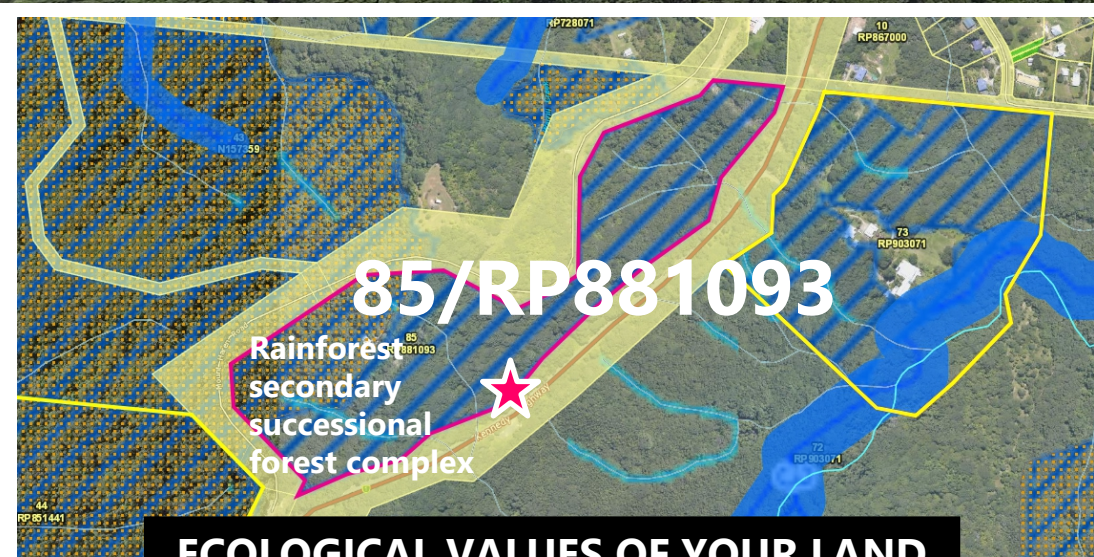


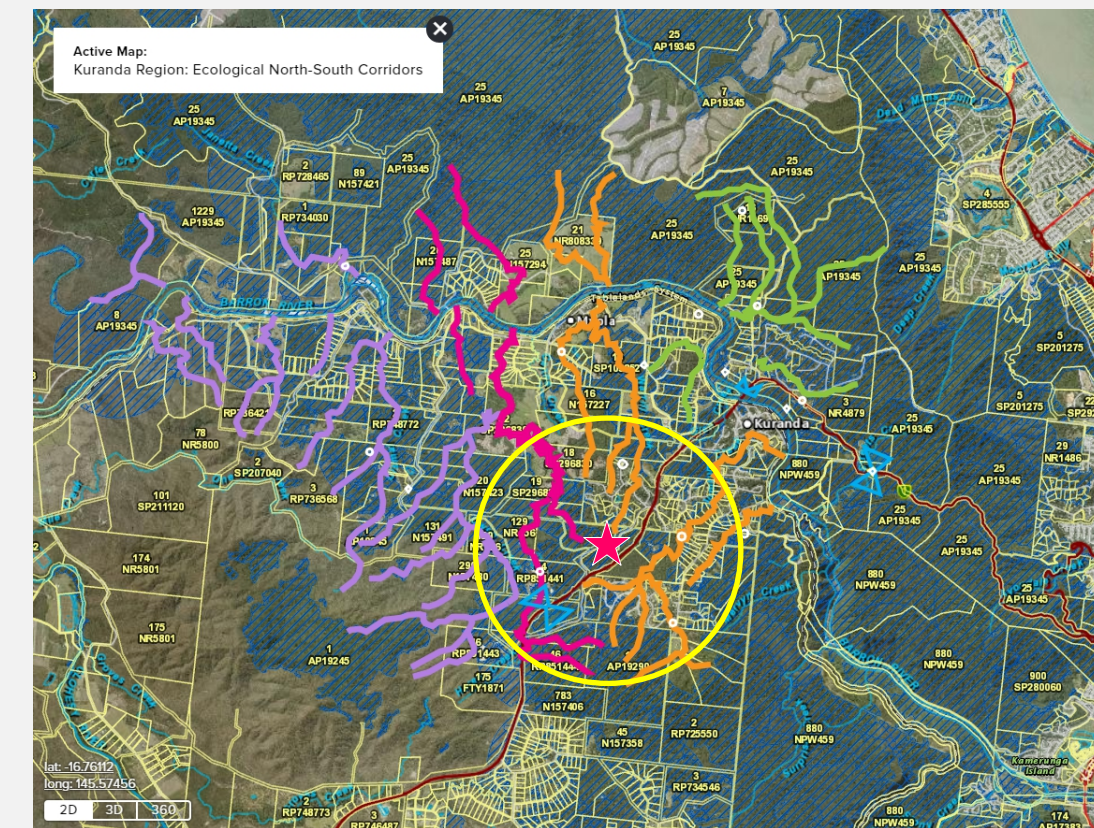


133 MOUNT HAREN ROAD KURANDA
Approximate boundary



ECOLOGICAL VALUES OF YOUR LAND

- Eastern Envirolink Link Corridor
- Contains essential cassowary habitat
- 1100 metres natural rainforest creeks
- Essential habitat (MSES regulated vegetation)
- Wildlife habitat (MSES threatened animal)



ECOLOGICAL SUPER-HIGHWAYS
(NORTH-SOUTH WATERBODIES)

- Kuranda Envirolink Corridor
- Bundarra Link Corridor
- Fairyland Link Corridor

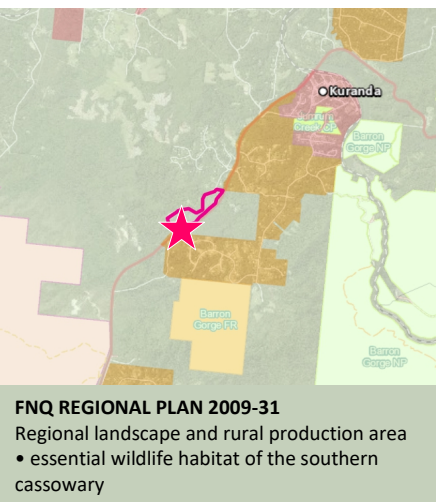
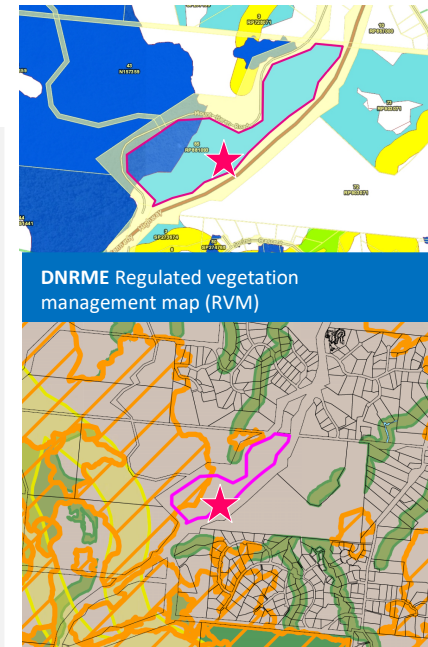
THREATENED SPECIES

- Cassowary sightings within 2km: 4 birds
- Kuranda Tree Frog habitat: Approximately 2000 metres upstream from recorded populations

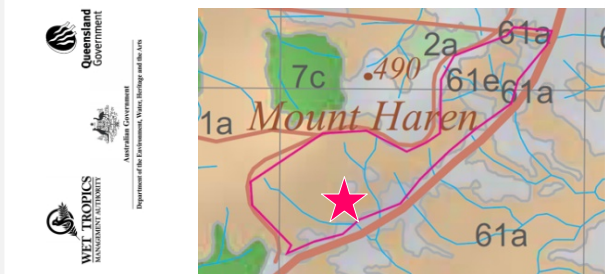


Conservation Agreement
> Expression of Interest
PROGRAM ID: BL-K19
TITLE: 85/RP881093
TOTAL LAND SIZE: 20.54 ha

This property is located on Kennedy Highway on challenging terrain in places and contains advanced secondary successional rainforest complexes. Numerous rainforest creek ways cross the Kennedy Highway at this location and would provide a safe haven on the western side of the highway for transiting Wet Tropics terrestrial species in the corridor. The property is integral to connectivity of the Envirolink Corridor providing the local cassowary easy movement north-south through central and eastern Kuranda.



MAREEBA SHIRE COUNCIL PLANNING SCHEME
2016 Rural zone, inside Ecological Corridor, 200m to Habitat Linkage, 3500m to Barron River



WET TROPICS
VEGETATION

VEGETATION COMPLEXES AND MOSAICS

Secondary successional complexes
61e Variable communities of native vegetation with a significant component of exotic species in the canopy, understorey and/or ground cover. Wet and moist lowlands highlands on a variety of geologies.