

DESCENDENTS OF MONA MONA

17 JULY 2017

MONDAY 2 - 4PM

KURANDA AMPHITHEATRE UNDERSTAGE

Aboriginal Heritage Project

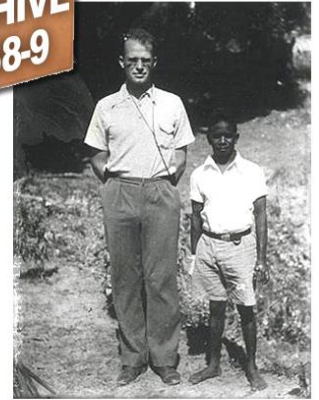
A team of Australian researchers is working with Indigenous communities across Australia to reconstruct their genetic history via ground-breaking research.

Researchers from the South Australian Museum and the University of Adelaide are using historic hair specimens, archival data and linguistic records to reconstruct a genetic map of Indigenous Australia prior to European contact. Funded by the Australian Research Council, this project aims to provide information that will:

- Allow Indigenous families to trace regional ancestry within Australia beyond oral or written records;
- Reconstruct personal and family genealogical history prior to the arrival of Europeans;
- Assist people from the Stolen Generation and others, with reunification and/or identification of family origins;
- Reconstruct migration patterns within Australia;
- Facilitate repatriation of Indigenous cultural items and human remains held at museums in Australia and overseas.

The project will draw on data and collection material collated by **Joseph B. Birdsell** and **Norman B. Tindale** during anthropological expeditions from 1928 and through to the 1970s, which is curated at the **South Australian Museum**.

A number of Indigenous individuals and communities have already collaborated in a recently-published pilot study that confirmed the deep connection and permanence of Indigenous groups on Country, and revealed the patterns of the initial peopling of Australia. The project aims to reach widely across Australia and engage as many families and communities as possible.



www.adelaide.edu.au/acad/ahp



project supported locally by

RSVP / MORE INFO
Jo Martin 0401 423 573

