



Owen Creek 12/12/2016 (above dam)



Owen Creek 12/12/2016 (above dam)



Warril Creek at bridge 08/01/2017  
(below dam)



Owen Creek 09/01/2017 (above dam)

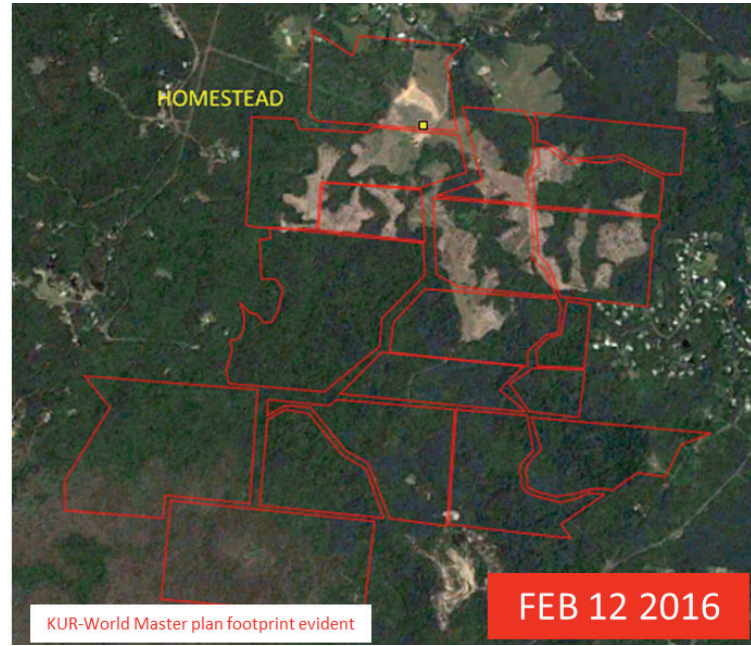
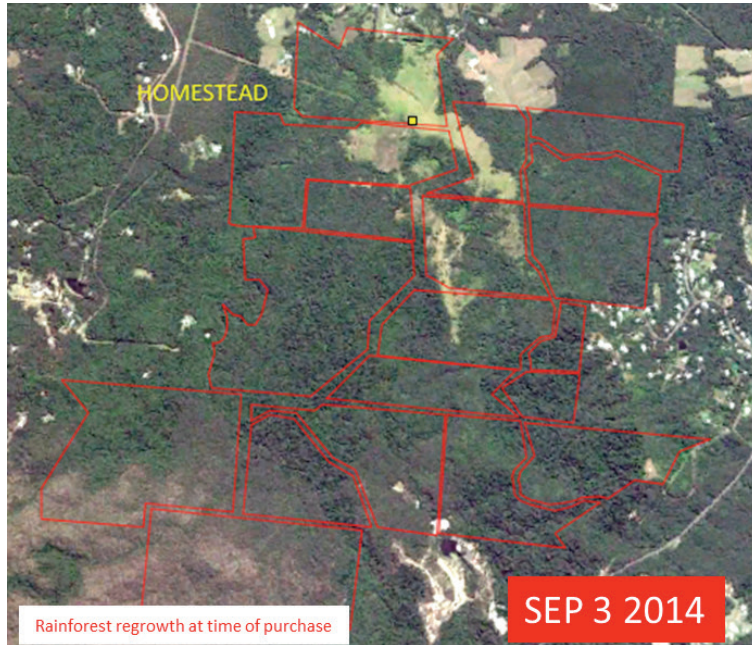


Owen Creek 09/01/2017 (above dam)



Owen Creek at bridge 08/01/2017  
(below dam)

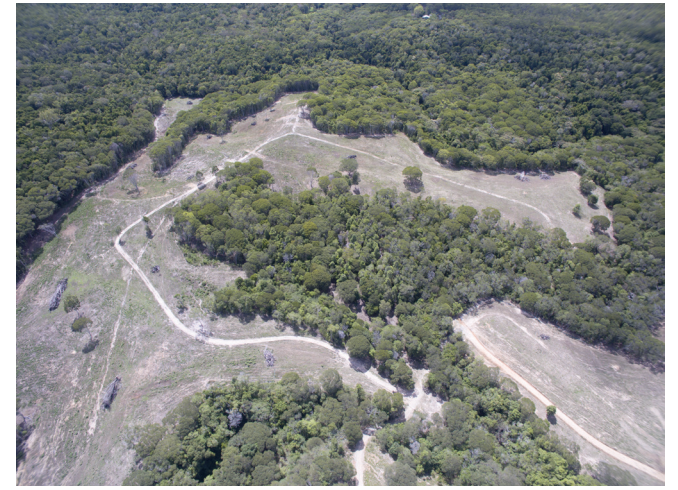
## Owen and Warril Creeks



120ha of recovering rainforest cleared during 2015



Dam construction upstream of critical Myola Treefrog streams



Part of clearing