

# KUR-WORLD Northern Zone Correction

**Topic:** Barnwell Rd / KUR-World

**Code:** BARN361834

**Date:** 3 August 2016



State Development Minister Dr Anthony Lynham said the independent Co-ordinator-General would work closely with the proponent and government agencies to ensure that all potential project impacts were considered and assessed and effective mitigation measures identified.

Member for Barron River Craig Crawford said there were strong views in the community about the project which will develop 230ha of the 626ha property.

“The site contains habitat of the protected Kuranda tree frog, but most of the development is proposed in the northern area of the site which has been cleared,” he said.

<http://www.cairnspost.com.au/business/640m-kuranda-ecoresort-project-gets-special-government-status/news-story/55760e07feb65aaedf36e46c537af7bd>

## The Cairns Post



Macau developer Ken Lee, seen here scuba diving on the Great Barrier Reef, is behind a \$650 million integrated resort at Kuranda.

### \$640m Kuranda eco-resort project gets special government status

Nick Dalton, The Cairns Post  
July 13, 2016 5:00am

Dr Conrad Hoskins JCU completed, at the proponent's request, the document 'Surveys for endangered frogs and other wildlife on Barnwell Road Holdings' that forms a required ATTACHMENT in the EPBC submission.

The report document date is 30 April 2016 and clearly demonstrates the water-body habitats for the following endangered species in the 'Northern zone':

- Kuranda Tree Frog *Litoria myola*
- Australian Lacelid Frog *Litoria dayi*
- Myola Palm *Archontophoenix myolensis*

The uncleared forested 'Southern zone' of the site area is habitat for the endangered cassowary and northern quoll, amongst others. A total of 22 endangered and 13 threatened species on the project area.

Excerpts from Dr Conrad Hoskin's report:

#### Surveys for endangered frogs and other wildlife on Barnwell Road Holdings

**APR 30 2016**

Dr Conrad Hoskin

Senior Lecturer & Researcher  
College of Marine & Environmental Science  
James Cook University  
Townsville, 4811

Email: conrad.hoskin@jcu.edu.au  
Phone: +61 (07) 4781 6048  
Website: <https://research.jcu.edu.au/portfolio/conrad.hoskin>



Surveys conducted for Reever & Ocean Pty Ltd

30<sup>th</sup> April 2016

Full document link:

<http://epbcnotices.environment.gov.au/entity/annotation/edd0b23b-0b26-e611-bb47-005056ba00a8/a71d58ad-4cba-48b6-8dab-f3091fc31cd5?t=1468056983993>

Myola Palm *Archontophoenix myolensis*



Fig. 5. Palm records. Blue symbols show where palms were encountered during the surveys. These palms may be *Archontophoenix myolensis*.

Kuranda Tree Frog *Litoria myola*

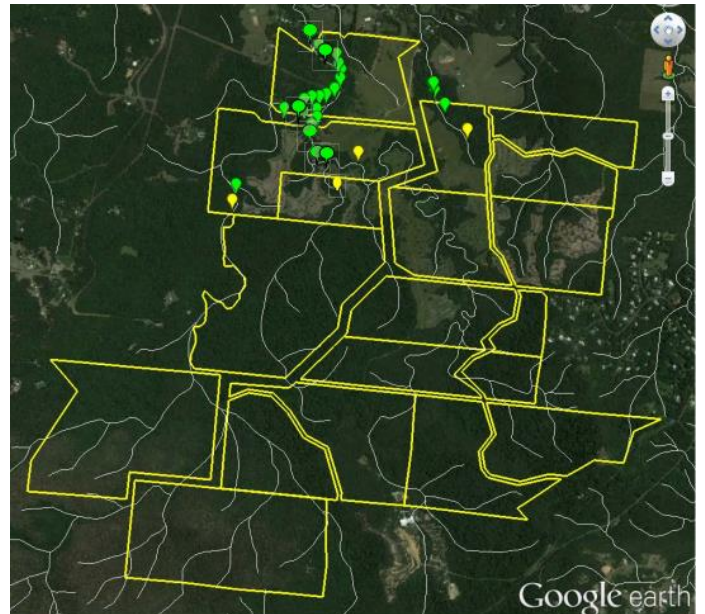


Fig. 2. *Litoria myola* records. *Litoria myola* records are shown as green symbols. Estimated potential upstream extents of *Litoria myola* are shown as yellow symbols.

Australian Lacelid frog *Litoria dayi*

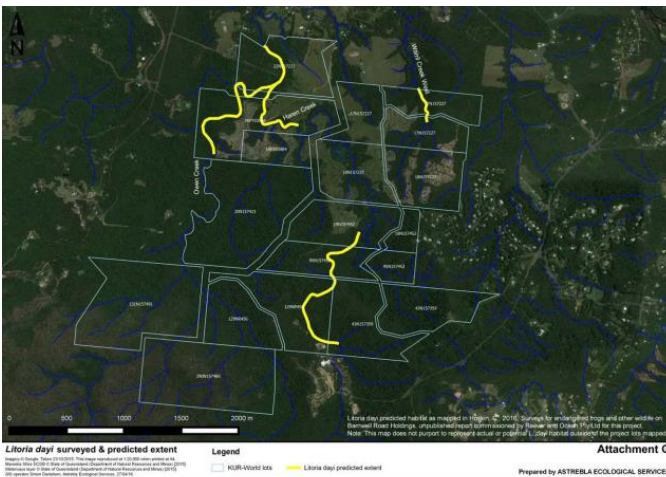


Fig. 4. Potential habitat for the Australian Lacelid frog (*Litoria dayi*). Sections of creek marked in yellow are of potentially suitable habitat for *Litoria dayi*, based on habitat use at nearby sites in the Myola area. Map prepared by Simon Danielsen (Astrebla Ecological Services), in consultation with Conrad Hoskin (ICU)

Dr Conrad Hoskin:

“The red shaded area is a creek that probably had *Litoria myola* but is now filled with sediment from the dam.” – see map bottom left.

A ‘stop work’ was called on the RURAL DAM in December 2015 by Mareeba Shire Council after reports from adjoining residents. A retrospective application for the dam -seemingly built ‘by eye’ without an engineer’s design or Soil and Erosion plan - was lodged to MSC on 22 February 2016.

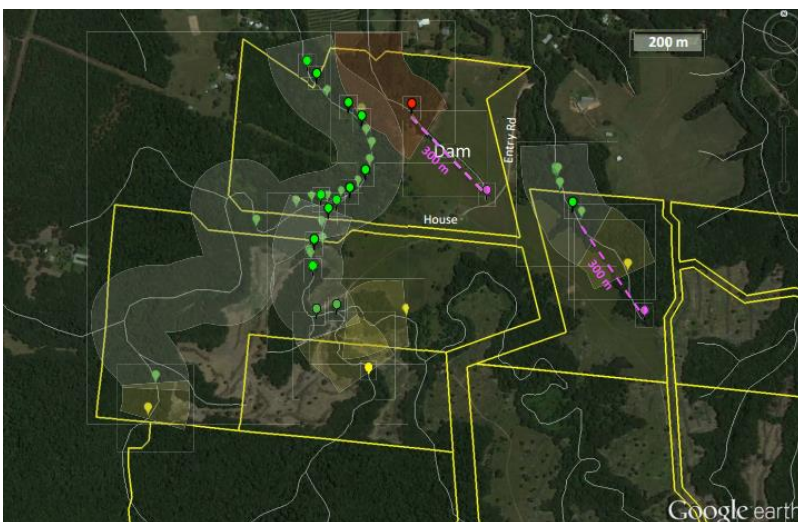


Fig. 3. Close-up of *Litoria myola* records. *Litoria myola* records are shown as green symbols. Transparent green shading shows a buffer of approx. 100 m wide on either side of stretches of creeks where *Litoria myola* was detected. Estimated potential upstream extents of *Litoria myola* are shown as yellow symbols, with a 100 m buffer (yellow shading) on either side of the creeks. The red shaded area is a creek that probably had *Litoria myola* but is now filled with sediment from the dam. The red symbol within this shading shows the potential former upstream extent of *L. myola* on this creek. This was determined as 300 m downstream from the top of this creek, which is the same distance as *L. myola* occurs from the top of the adjacent small creek (pink symbols and dashed lines).

Dr Conrad Hoskin noted in his report the damage the unpermitted dam had caused downstream in frog habitat – in fact the ‘seasonal gully’ that was dammed was ephemeral frog breeding grounds for Critically Endangered Kuranda Tree Frog.

The Rural Dam was approved by MSC on 20 July 2016.

Myola palm habitat is also found in the creek behind the illegally built dam wall.